

egregious - PO 1

Identify the following syllable types. Write the syllables in the appropriate columns below.
If you need help on a syllable type, replay the lesson.

ca
jest
scarf
-gious

shrunk
harp
by
starve

gre
worst
e
gum

Closed	Open	Vowel- <i>r</i>	Final Stable



egregious - PO 2

Circle the open syllables and underline the closed syllables. Practice reading the syllables.

1. ro

huff

pa

2. crank

by

shalt

3. brunt

suds

mo

4. I

mi

chef

5. snack

stung

wax

6. ma

flush

vo

7. stock

mush

grand

8. so

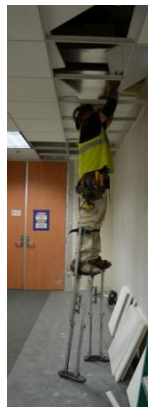
ste

pill

9. clasp

brash

stilts



neuhaus
academy